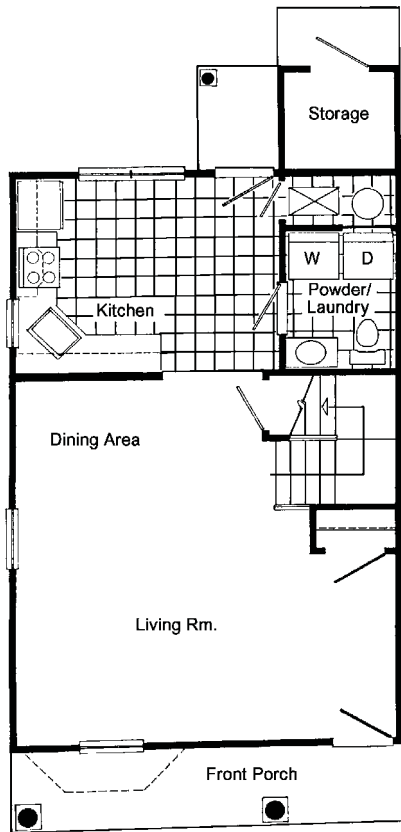




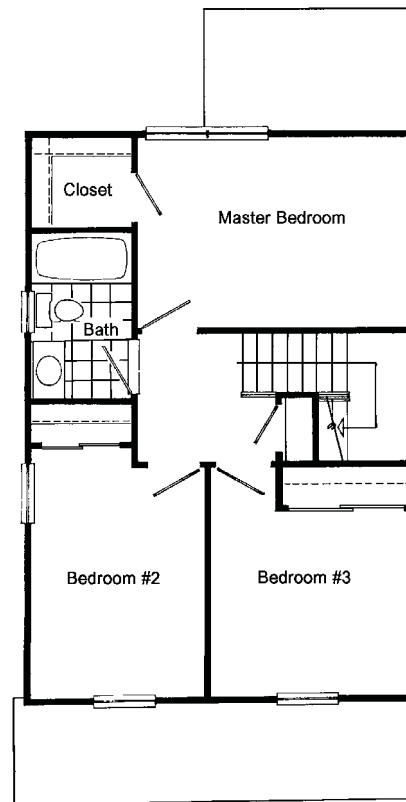
Floor Plan D

Three Bedroom - One & One Half Baths

This townhome design has 1118 square feet of living space, a front and rear entrance, and three full bedrooms which are located on the second floor. These homes are available to qualified buyers at the So. Main Street and renters at Parkside and Old Cranbury Rd.



Plan D - First Floor



Plan D - 2nd Floor