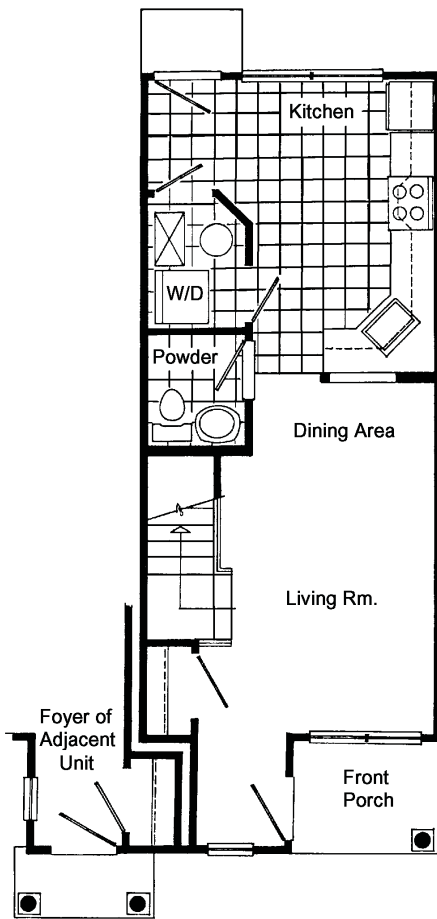


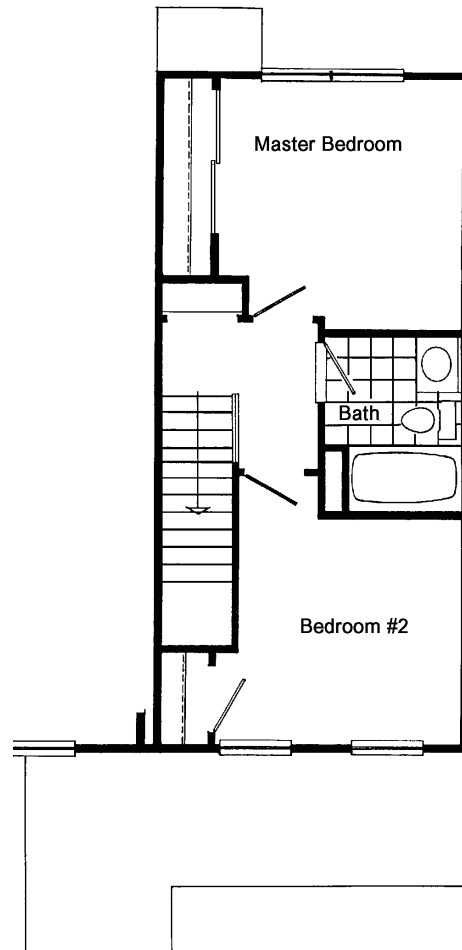
Floor Plan B

Two Bedroom - One & One Half Baths

This two-story townhome style floor plan features approximately 863 square feet of living space. The entrance on the first floor leads to ample living area, a large kitchen and a powder room, except at Parkside and Old Cranbury Rd., where there is no powder room. Two bedrooms and a full bath are located on the second floor. A limited number of these homes are available for purchase and rent to qualified households.



Plan B - First Floor



Plan B - Second Floor