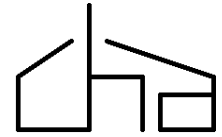




Cranbury Housing Associates
Presents



Applewood Court

Currently under development in the Township of Cranbury, New Jersey, Applewood Court will offer 32 contemporary one-, two- and three- bedroom rental apartments to income qualified households at affordable rental rates.* And, qualified veterans will be given a preference for 5 of the apartments at Applewood Court.+

Monthly Rental Rates

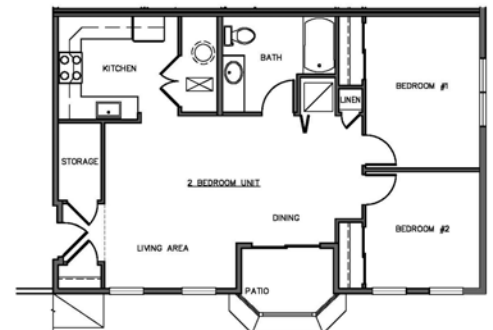
	1BR	2BR	3BR
Very Low	\$ 440	\$ 510	\$ 580
Low	\$ 821	\$ 976	\$ 1,125
Moderate	\$ 999	\$ 1,210	\$ 1,390

(Rental rates do not include utilities.)

Maximum Gross Annual Income Limits for Middlesex County, NJ

2014 #in HH	Very Low Income	Low Income	Moderate Income
1	\$22,050	\$36,750	\$58,800
2	\$25,200	\$42,000	\$67,200
3	\$28,350	\$47,250	\$75,600
4	\$31,500	\$52,500	\$84,000
5	\$34,020	\$56,700	\$90,720
6	\$36,540	\$60,900	\$97,440

Income Limits are subject to change without notice.



Cranbury Housing Associates
216 Rockingham Row
Princeton, NJ 08540
Phone: 609-786-1102
Fax: 609-786-1105
E-mail: Cranbury@HousingQuest.com
www.CranburyHousing.org

Floor plans are NOT meant to represent the actual dimensions or square footage of the unit, but rather provide applicants with an idea of its layout. Actual units may be the reverse of what is portrayed, and may vary in their detail and dimensions. The choice of floor plans is limited by income category and priority number. * Minimum and maximum income limits, credit criteria and other restrictions apply. 3 apartments are set aside for very low income residents. Rents and income limits subject to change without notice. +Veterans also subject to rules under NJAC 54:4-8.10.

This is an equal housing opportunity.



Cranbury Housing Associates is a 501(c)3 Non-Profit Corporation.